



Society for Asian Art

ASIAN ART IN LONDON

IN PARTNERSHIP WITH CONLEY & SILVERS

OCTOBER 29 - NOVEMBER 7, 2026

ASIAN ART IN LONDON

A CURATED JOURNEY THROUGH THE WORLD'S GREAT COLLECTIONS & AUCTIONS

Each autumn, London becomes the beating heart of the global Asian art world. As a part of the annual [Asian Art in London event](#), galleries unveil their most exquisite treasures, auction houses present the major Asian sales of the season, and curators, collectors, scholars, and specialists gather for a week of viewings, lectures, receptions, and discovery.

Our journey is timed to coincide with the beginning of *Asian Art in London*, offering us access to an extraordinary lineup of events and activities. Over nine richly layered days, we will participate in the excellent program provided by *Asian Art in London* as well as supplementing the experience with our own exclusive events.

Accompanied by beloved historian Julian Brown and Blue Badge Guide Sophie Campbell, we will explore the city through the lens of its long and complex relationship with Asia – across the collections of great museums, previews of prestigious auction houses, and architectural facades in historic neighborhoods that reveal centuries of cultural exchange.

We invite you to join us for this remarkable journey – where scholarship meets connoisseurship, and London reveals itself at its most inspiring.



THE ASIAN ART IN LONDON PROGRAM

Asian Art in London 2026 will take place from Thursday, October 29 to Tuesday, November 10. The official 2026 calendar will be published in September. Specific auction house talks, gallery openings, and related events will be confirmed once the calendar is released.

Highlights of previous years have included:

- **Late Night Openings:** Unique opportunities to explore galleries across Kensington Church Street, St. James's, and Mayfair, often accompanied by wine receptions.
- **Private Evening at the V&A:** An exclusive after-hours reception with private viewing access to an Asian art exhibition.
- **Expert-Led Talks:** Daily lectures on Asian art topics hosted by premier auction houses including Christie's, Bonhams, and Sotheby's.
- **Film & Book Events:** Premier screenings and debut presentations related to Asian art and culture.

*Parliament on the Thames:
Jacob Diehl via Unsplash*

EXCLUSIVE SAA PROGRAMMING

PRIVATE ACCESS EVENTS & EXCLUSIVE TOURS ARRANGED FOR OUR SAA GROUP

An exclusive pre-opening handling session at Sotheby's, with coffee and curator-led access to significant works from the forthcoming Asian art sale before the public preview begins.

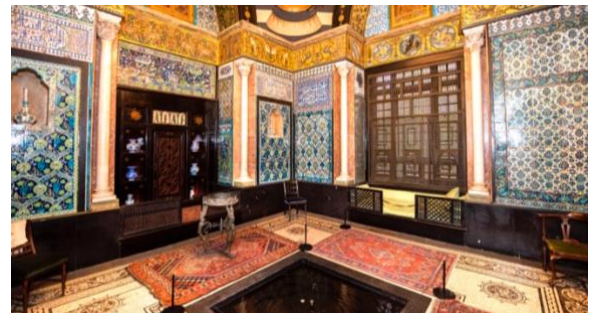
Educational lectures and privileged viewing opportunities at Christie's and Bonhams, providing insight into additional autumn sale highlights.

A private visit to the renowned Woolf Collection of Chinese jades, with coffee and conversation hosted by Jonathan Woolf – an extraordinary opportunity to view one of the finest jade collections outside the Palace Museums.

A fully privatized evening at Leighton House, granting after-hours access to Frederic Leighton's extraordinary [Arab Hall](#) and Victorian studio, with cocktails and dinner in one of London's most evocative interiors.



Sotheby's, New Bond Street by [Roger Cornfoot](#),
[CC BY-SA 2.0](#)



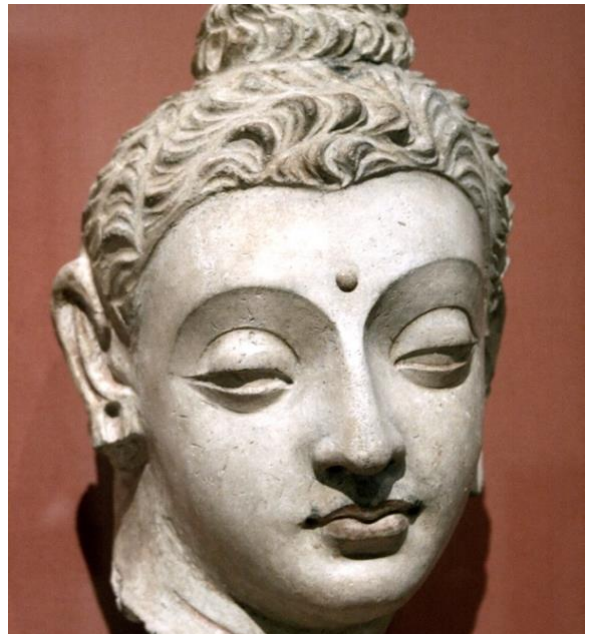
Leighton House: Photos courtesy of [Leighton House](#)

An exclusive candlelit opening of Sir John Soane’s Museum, privately reserved for our group, offering after-hours exploration of Soane’s theatrical labyrinth of antiquities and architectural fragments, accompanied by a specially curated presentation of archival materials selected for our visit by the museum’s curatorial team.



Sir John Soane’s Museum: [Simon Burchell, CC BY-SA 4.0](#)

A focused, multi-part visit to the Victoria and Albert Museum (V&A), featuring curator-led exploration of the China Gallery, the Robert H.N. Ho Family Foundation Galleries of Buddhist Art, and the newly reopened Korea Gallery; a privately guided visit to the Toshiba Gallery of Japanese Art; and a special viewing of selected works on paper – including Japanese prints and South Asian paintings – drawn from storage and arranged exclusively for our group.



Head of the Buddha from Hadda, Central Asia, V&A: [Michel wal, CC BY-SA 3.0](#)

A private tour of the British Museum’s Asian collections, including the China and South Asia galleries, with focused time in the Sir Joseph Hotung Gallery of China and the Amaravati sculptures of early Buddhist India.



British Museum: Polychrome lacquer dish: [Paul Hudson from United Kingdom, CC BY 2.0](#)

A special excursion to Cambridge offers immersion in one of Europe's great centers of scholarship. **Curator-led visits at the Fitzwilliam Museum in Cambridge**, with two senior specialists in Asian art guiding our study of the collections. As an extraordinary benefit for SAA visitors, original master drawings by Leonardo da Vinci, Raphael, and Michelangelo will be brought out for exclusive viewing.

After time to explore independently at the museum, the afternoon continues with a walking exploration of Cambridge's historic colleges, grand courts, and Gothic chapels. For those interested, an optional chauffeured punt along the River Cam can be arranged during free time in the city.

Scholarly lectures throughout the program by Dr. Julian Brown, providing historical and museological context that deepens our engagement with the objects and collections we encounter.

Private historical walking tours with Blue Badge guide Sophie Campbell, tracing London's evolution from Roman foundations and medieval guild halls to Georgian squares and Victorian neighborhoods shaped by



Fitzwilliam Museum: [Paul Hudson from United Kingdom, CC BY 2.0](#)



Inside the Fitzwilliam Museum: [Malcolm Neal, CC BY-SA 2.0](#)



London Wall versus The Shard: [Vini Brasil via Unsplash](#)

global trade. Explore Marylebone and Mayfair's elegant streets and art-world corridors around Sotheby's, Christie's, and Bonhams; wander Notting Hill's pastel terraces and grand crescents with time to browse the celebrated antiques stalls of Portobello Road; and uncover the City of London's Roman roots at the heart of Britain's financial district.

Elevated group dinners showcasing the breadth of London's extraordinary multiethnic culinary scene, as well as multiple **privately catered events in historic settings**, designed to foster conversation and connection, including a **private afternoon tea reception**, thoughtfully curated in keeping with London tradition.



Notting Hill



Portobello Road, Notting Hill



Churchill Arms, Notting Hill:
[Nicholas Doherty](#) via Unsplash

YOUR TEAM

DR. JULIAN BROWN



Expert Lecturer

Born and educated in England, Dr. Julian Brown has made Paris his home for over thirty years. Introduced to travel at a young age, he began leading tours in the early 1980s while studying French and Spanish at the University of Durham. Today, he conducts museum visits and historical walking tours throughout Europe and Southeast Asia.

Julian holds a PhD from the School of Oriental and African Studies (SOAS), University of London, where his research focused on the colonial and museological contexts of the ancient art of Champa (Vietnam). He has lectured widely at universities, museums, royal societies, and international conferences. His clarity and depth of knowledge form the scholarly backbone of the journey.

SOPHIE CAMPBELL



London Guide

Sophie Campbell is a London Blue Badge guide and acclaimed travel writer who has spent twenty-five years interpreting the city for international audiences. Raised in Asia and Africa, she brings a global perspective and a deep understanding of London's layered history. She wrote a monthly column for the Daily Telegraph for

many years and guides museum groups, journalists, and corporate clients through London's neighborhoods.

DANA CONLEY, CONLEY & SILVERS



Tour Director

Dana Conley fell in love with travel while studying art and politics on the Stanford-in-Florence program. She has since traveled to over fifty countries in search of authentic experiences, beautiful meals, and life-changing moments to share with her clients.

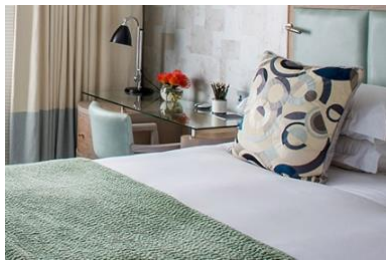
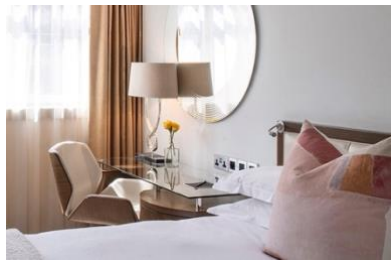
Through Conley & Silvers, Dana offers highly personalized service and thoughtfully curated itineraries around the world. Her background spans Asian security research at the Pentagon, art appraisal, and gallery direction. When not tour managing or scouting new destinations, she divides her time between Europe, New York City, and Great Guana Cay.

Cabridge Punting: [Nathália Arantes](#) via Unsplash





ACCOMMODATIONS



THE MARYLEBONE

The Marylebone is a refined five-star retreat in the heart of central London, blending contemporary design with the warmth of a classic London townhouse. Tucked just off Marylebone High Street, the hotel offers a sophisticated yet residential atmosphere – a calm counterpoint to the energy of Mayfair and the West End. A vibrant brasserie, stylish cocktail bar, and access to The Third Space health club and pool provide both comfort and renewal after a day of cultural exploration.

Marylebone High Street itself is one of London's most desirable neighborhoods – an elegant, lively enclave lined with independent boutiques, acclaimed restaurants, charming cafés, and beloved bookshops. It offers the pleasure of wandering and discovery just steps from the hotel's front door.

Located moments from Sotheby's, Christie's, and the galleries of Mayfair and St. James's, the hotel places guests within easy walking distance of London's leading auction houses and museums. Nearby Bond Street Underground station offers seamless access to the wider city.

Guests will stay in Classic Queen Rooms (single occupancy) or Deluxe King Rooms (double occupancy). Classic Rooms offer approximately 18-20 square meters (194-215 square feet) of thoughtfully designed space, while Deluxe King Rooms provide a more generous 24-28 square meters (258-301 square feet). Each room features elegant contemporary furnishings, plush bedding, marble bathrooms, and refined modern comforts, creating a polished and welcoming London base.

Marylebone High Street: [Philafrenzy, CC BY-SA 4.0](#)



DETAILS

WHAT TO EXPECT

We have thoughtfully selected walking routes designed for guests with good mobility. Please note that this program includes daily touring on foot as well as extended time standing in museums and galleries. Guests are always welcome to opt out of any activity, take a café break, or arrange independent transportation at their own expense.

While we are confident you will enjoy the itinerary as designed, we reserve the right to make adjustments should opportunities arise that enhance the overall experience.

IMPORTANT NOTES

Participation is limited to 20 guests, with a maximum of 6 single-occupancy rooms available. After the first deposit, guests will be required to submit a signed standard Waiver and Release of Liability form for both C&S and the Society for Asian Art.

Sebastian Coman Photography, via Unsplash



SCHEDULED & UNSCHEDULED TIME

Because the official calendar for Asian Art in London 2026 will not be finalized until September 2026, a detailed day-by-day schedule cannot be confirmed at the time of sale. Rest assured that all of the major highlights outlined in this brochure will be included.

We intentionally leave several evenings and at least two afternoons unscheduled, allowing for independent exploration – whether attending concerts or West End theatre or simply enjoying time at leisure in London.

ARRIVAL NOTES

Complimentary airport transfers are included for arrivals on October 29 or 30.

- Thursday, October 29 - Depart the U.S. for London
- Friday, October 30 - Arrive London
 - 3:00 PM hotel check-in (guaranteed early check-in requires booking the prior night)
 - 3:30 PM Afternoon tea and welcome meeting
 - 5:00 PM Guided walking tour of Marylebone

DEPARTURE NOTES

Complimentary airport transfers are included for departures on November 7 or 8.

- **Saturday, November 7 - Depart London** (Flights departing after **11:00 AM** are recommended, as our farewell dinner on November 6 will conclude later in the evening.)

CONSIDERING AN EXTENSION?

Asian Art in London runs from October 29 through November 10. Guests wishing to participate independently in their full calendar of events may consider arriving a day early and staying extra nights after our trip concludes. Beyond the official Asian Art in London calendar, we are happy to assist with private arrangements:

PRIVATE BLUE BADGE GUIDE

Revisit London's highlights or explore additional neighborhoods with our trusted Blue Badge Guide, Sophie Campbell. Her fee is £400 per half day (4 hours), which may be shared among several guests. Conley & Silvers will assist in arranging a customized itinerary.

OPTIONAL DAY TRIP - BRISTOL

Just 1 hour 20 minutes by train from London, Bristol is one of Britain's great historic port cities and an unexpected center for the study of Asian art. At Bristol Museum & Art Gallery, enjoy a bespoke two-hour curator-led session exploring the Schiller collection of Chinese ceramics and the Abbey collection of Chinese glass – among the finest holdings of Chinese glass outside Asia – with possible access to selected works from storage, depending on group interest. If sufficient interest exists, we would be pleased to organize this scholarly extension for November 7.



*James Street, Marylebone
District, Mayfair*

COSTS:

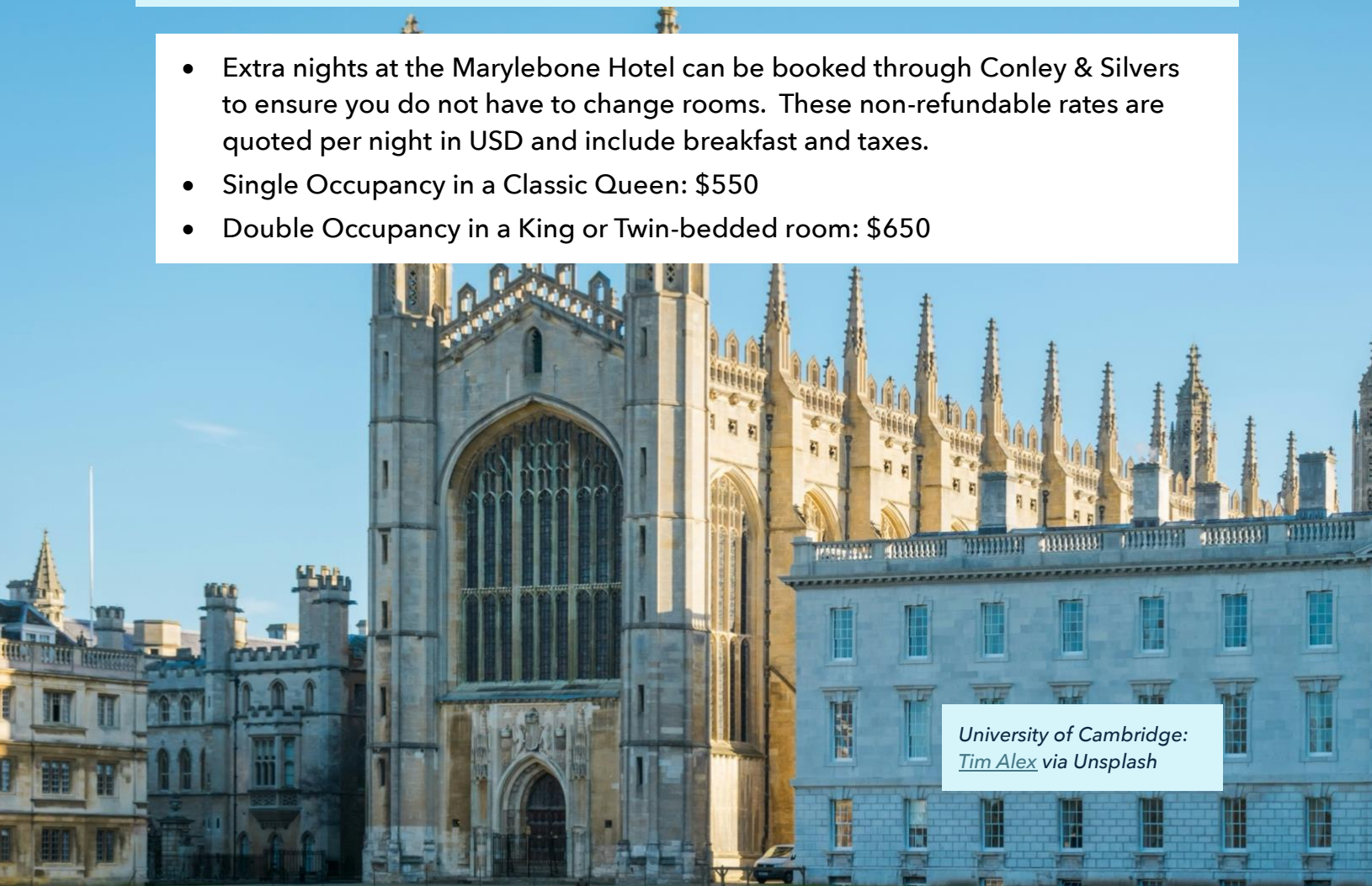
\$9,440 PER PERSON DOUBLE OCCUPANCY

+ \$1,500 SUPPLEMENT FOR SINGLE OCCUPANCY

** All prices shown reflect payment of the initial deposit by credit card and the remaining balance by check or wire transfer. Should you prefer to pay the final balance by credit card, a 3.5% transaction fee will apply.*

OPTIONAL ADDITIONS:

- Extra nights at the Marylebone Hotel can be booked through Conley & Silvers to ensure you do not have to change rooms. These non-refundable rates are quoted per night in USD and include breakfast and taxes.
- Single Occupancy in a Classic Queen: \$550
- Double Occupancy in a King or Twin-bedded room: \$650



University of Cambridge:
[Tim Alex](#) via Unsplash

INCLUDED:

- 8 luxury hotel nights with taxes included, arriving Friday October 30, 2026, and checking out on Saturday November 7, 2026
- All accommodations, meals, and excursions as specified in the itinerary
- 8 breakfasts, 2 lunches, 1 afternoon tea, 3 dinners, and multiple receptions
- Local wine, beer, coffee, tea, and soft drinks are included at lunches and dinners. Receptions include hors d'oeuvres wine, beer, and non-alcoholic beverages
- Comprehensive program of briefings, lectures, and presentations
- All group entry fees and tickets
- Airport transfers (on specified dates)
- Group transportation in private vans or coaches
- Expert & local guide fees
- All gratuities
- Baggage handling
- A printed itinerary
- Lecture series by Dr. Julian Brown, including a pre-trip suggested reading and film list.
- Private walking tours with Blue Badge Guide Sophie Campbell

- A multitude of exclusive events as detailed in the itinerary
- Dana Conley as Tour Director and concierge services by Conley & Silvers for help with personal arrangements during the tour dates.

NOT INCLUDED:

- Round-trip airfare. U.S. domestic and international airfare between home and our trip is not included in the program rates.
- Passport or UK Electronic Travel Authorization (ETA) expenses
- Medical expenses and immunizations
- Travel, medical, or evacuation insurance
- We strongly recommend all guests purchase any travel insurance policies for your specific needs within two weeks of the first deposit to obtain the best coverage. C&S can help guests find a policy
- Meals and beverages other than those specified as included
- Personal charges such as telephone calls, laundry, spa and room service expenses



RSVP & DEPOSIT

We would be delighted to have you join us for this exceptional program. Interest in this journey has been strong, and we anticipate it will sell out quickly.

To register, please [click this link](#) and complete the online RSVP form.

Reservations will be confirmed in the order received. Should requests exceed available space on the first day, priority will be determined by time of submission.

Within 48 hours of submitting your RSVP, you will receive an email confirming your status. If space is available, the message will include a secure link to submit your **\$1,500 deposit** by credit card. Deposits must be received within 48 hours of confirmation; otherwise, the space will be released to the waitlist.

The remaining balance is due **July 10, 2026**, payable by check or wire transfer. Should you prefer to pay the final balance by credit card, a 3.5% processing fee will apply.

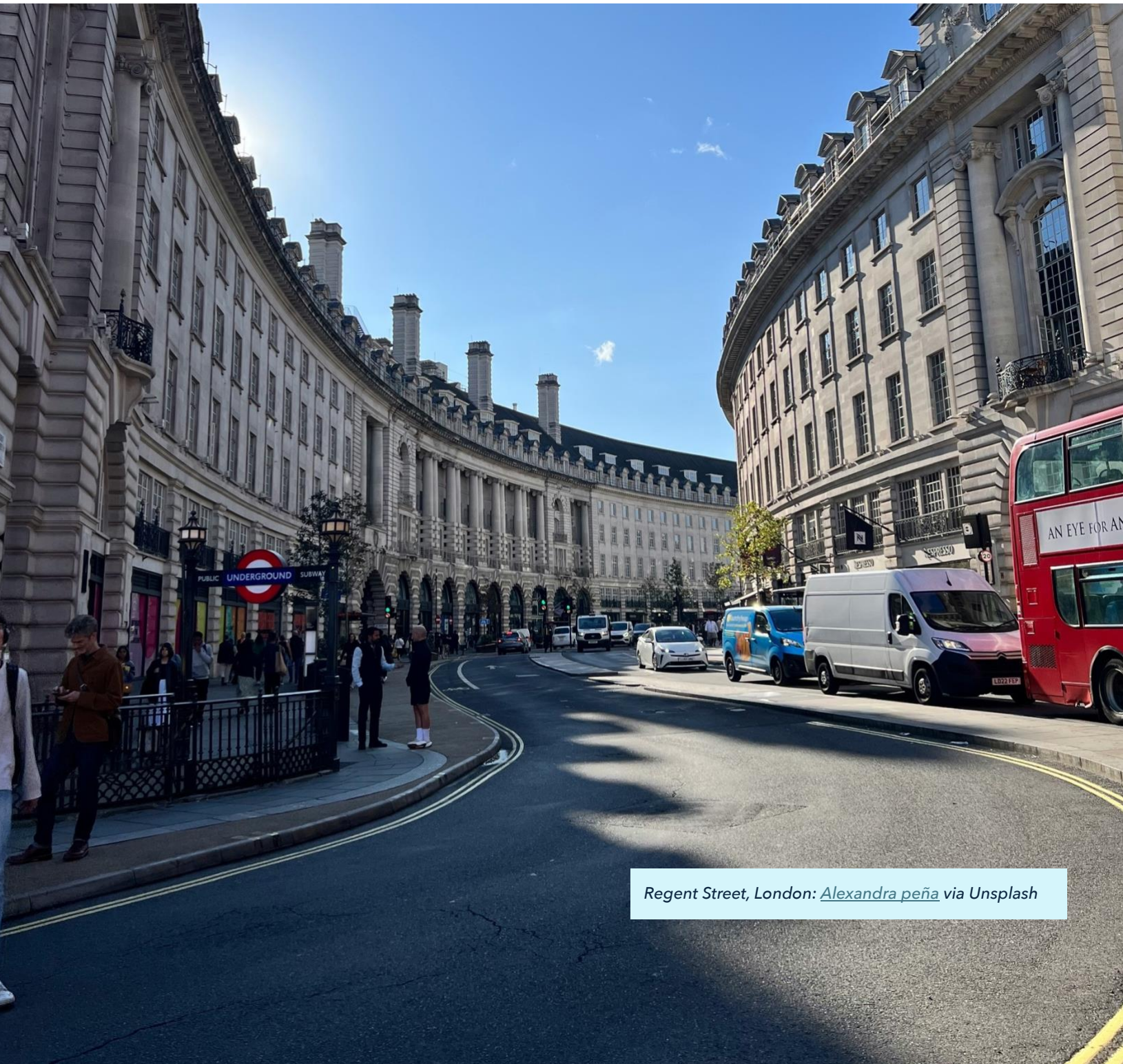
All deposits are non-refundable unless your space can be filled by another participant.

Email thoughts & suggestions to: dana@conleyandsilvers.com

[Sue Winston](#) via Unsplash



CONLEY & SILVERS LLC
WWW.CONLEYANDSILVERS.COM
+ 1 347 951 7948
CST#2107694-40



Regent Street, London: [Alexandra Peña](#) via Unsplash